

THIS PERENNIAL MAKES GARDENING EASY! SEE PAGE 36

CELEBRATING
25 years
1995
2020

Garden Gate®

THE SPRING ISSUE!

BONUS
MAKE YOUR GARDEN
A BIRD &
BUTTERFLY
HAVEN

**DON'T PLANT ANOTHER
PERENNIAL WITHOUT
READING THIS ADVICE**

Your Garden
Needs These Showy
Spring Flowers

**3 SPRING
COMBOS**
Guaranteed to Make
Your Garden Better!

**GARDEN QUESTION?
WE HAVE ANSWERS!**

SHADE GARDEN SECRETS
THE EASIEST TRELIS EVER

**PLUS! 5 Garden-Saving Strategies
You Need to Know This Spring**

March/April 2020

\$7.99US \$8.99CAN



0 92567 39134 9

Display until April 21, 2020

How to Grow This Garden

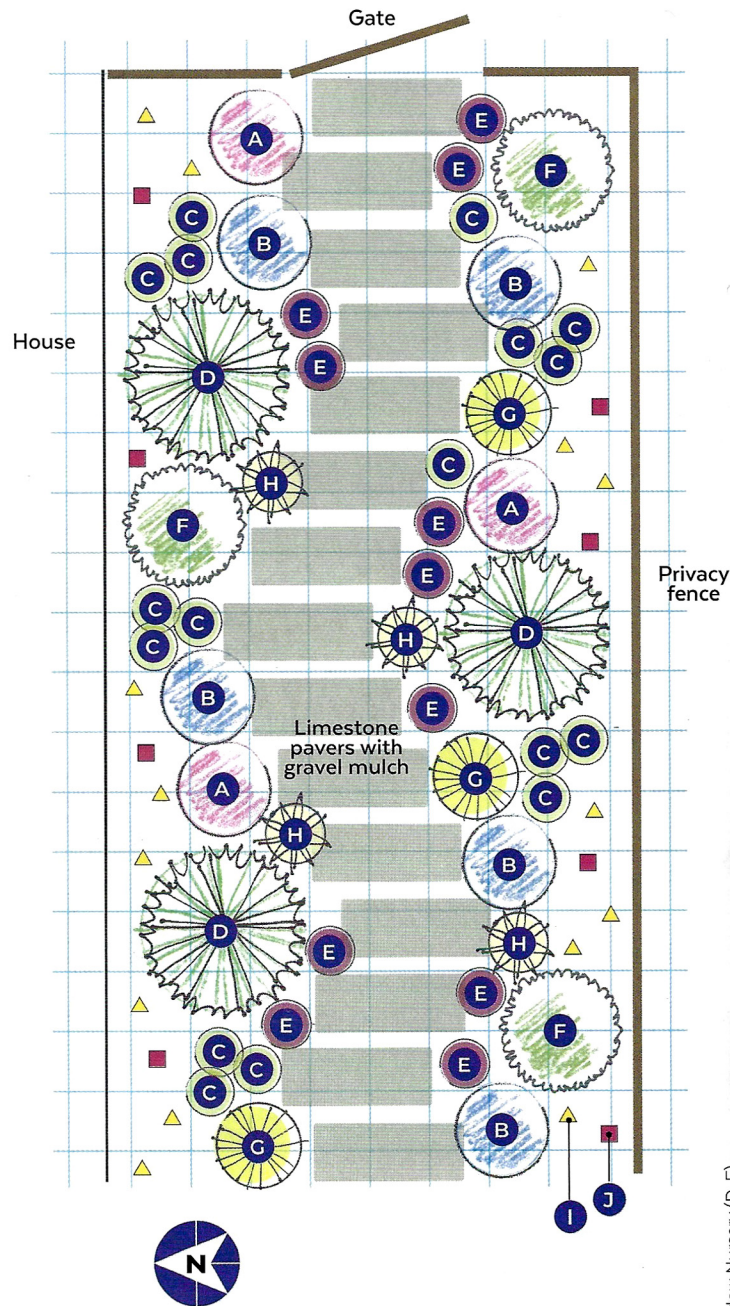
Botanical Names

Grape hyacinth
Muscari armeniacum

Including the evergreen arborvitae and inkberry holly ensure that there's color in this garden in all four seasons. The flowers really get going in late spring and early summer, when the geranium, bellflower, coral bells, sweet iris and crown imperial bloom. (If you want flowers even earlier, a sprinkling of minor bulbs, such as grape hyacinths, would create a lovely carpet amongst the lower-growing perennials in early spring.) Later in summer, the larger lily and phlox flowers will be grabbing the attention, still supported by the beautiful golden sedge and red-purple coral bells foliage. You may get a few follow-up blooms from the perennial geranium and phlox through fall.

We've chosen mostly compact plants for this small space, so you shouldn't have to do much staking or pruning to keep plants in bounds, but after strong winds or a heavy rain you may find that the lilies lean a bit. If that happens, you could stake them up with bamboo and twine or just cut the heavy tops off if the flowers are finished. (Just be sure to leave at least half the stalk to gather energy for next year's blooms.) In early spring, trim back and rake up dead perennial foliage to tidy the space and ready it for the next round of flowers and foliage. 🌱

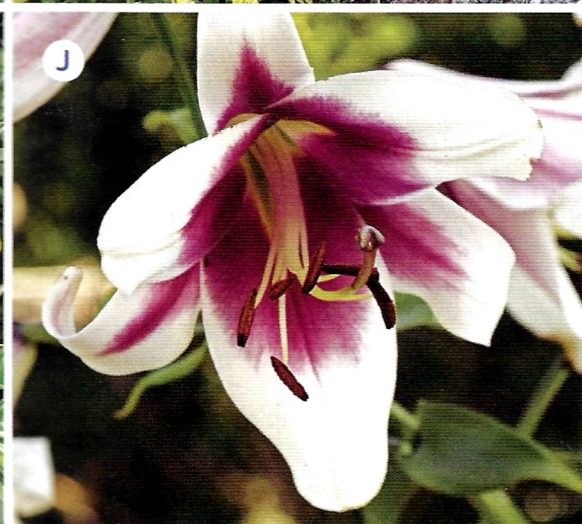
— Eric Flynn and Kristin Beane Sullivan



Scale: 1 square = 1 square ft.

- A Perennial geranium** *Geranium* 'Dragon Heart' Perennial; magenta blooms early summer to fall; full sun to part shade; 18 to 24 in. tall and wide; cold hardy in USDA zones 5 to 8 **Number to plant: 3**
- B Serbian bellflower** *Campanula poscharskyana* Perennial; bell-shaped blue-purple flowers in late spring; full sun to part shade; 6 to 10 in. tall, 18 to 24 in. wide; cold hardy in USDA zones 3 to 8 **Number to plant: 5**
- C Garden phlox** *Phlox paniculata* 'Pink Flame' Perennial; pink flowers in summer; full sun to part shade; 12 to 18 in. tall, 9 to 12 in. wide; cold hardy in USDA zones 4 to 8 **Number to plant: 17**
- D Arborvitae** *Thuja occidentalis* Thin Man™ Tree; tall, slender evergreen grows relatively quickly; full sun to part shade; 12 to 15 ft. tall, 3 to 5 ft. wide; cold hardy in USDA zones 3 to 7 **Number to plant: 3**
- E Coral bells** *Heuchera* 'Sugar Berry' Perennial; compact plants have red-purple leaves with a silvery overlay and small spikes of pink flowers in late spring; full sun to part shade; 6 to 10 in. tall, 8 to 10 in. wide; cold hardy in USDA zones 4 to 9 **Number to plant: 11**

- F Inkberry holly** *Ilex glabra* Strongbox® Shrub; compact, evergreen foliage on compact mounds; full sun to part shade; 2 to 3 ft. tall and wide; cold hardy in USDA zones 5 to 9 **Number to plant: 3**
- G Bowles golden sedge** *Carex elata* 'Aurea' Perennial; chartreuse foliage and distinctive grassy mounds, forms brown inflorescences in early summer; part to full shade; 18 to 30 in. tall and wide; cold hardy in USDA zones 5 to 9 **Number to plant: 3**
- H Variegated sweet iris** *Iris pallida* 'Variegata' Perennial; purple flowers top lance-shaped cream-and-green variegated leaves in early summer; full sun to part shade; 2 to 3 ft. tall, 1 to 2 ft. wide; cold hardy in USDA zones 4 to 9 **Number to plant: 4**
- I Crown imperial** *Fritillaria imperialis* 'Lutea' Bulb; unusual clusters of nodding yellow flowers rise on tall spikes in late spring and early summer; full sun to part shade; 36 to 48 in. tall, 12 to 18 in. wide; cold hardy in USDA zones 5 to 8 **Number to plant: 15**
- J Oriempet lily** *Lilium* 'Silk Road' Bulb; large fragrant white and crimson trumpet-shaped flowers bloom in summer; full sun to part shade; 8 ft. tall, 1 to 2 ft. wide; cold hardy in USDA zones 3 to 9 **Number to plant: 8**



4

Hedge clipper attachment



Pole saw attachment



Leaf blower attachment



Any of these three tools can easily be attached to the extendable handle base.

Extendable handle



4 | SUNJOE 3-in-1 Cordless Hedge Trimmer, Pole Saw and Leaf Blower

It's not uncommon to need multiple power tools in one afternoon. With this multipurpose tool you only need one handle and one battery to switch between trimming, removing branches and cleaning up debris. The pole extends to reach high places, and each tool can be adjusted to a few different angles to better reach tough spots. **Gardener's Supply Company, gardeners.com (\$149.00)**



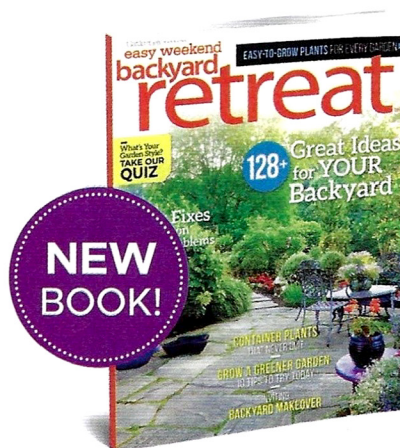
5



5 | Geum Tempo™ Rose

Delicate, dainty, romantic rosettes in a sweet pink shade sit atop dark magenta stems that add a little sass. This plant blooms earlier than other geums and the flowers last longer. Pollinators value it as an early-season food source, too. This perennial grows up to 20 inches tall and 12 inches wide in USDA zones 5 to 9. **Local garden centers**

GARDENGATESTORE.COM



BACKYARD RETREAT

The possibilities are endless for your backyard. If you're running out of inspiration or have big garden dreams but need a little advice on how to achieve them, check out our new book. We've compiled 100 pages of tried-and-true plants, current trends, best green gardening practices and solutions for tricky situations.

Garden Gate Store, gardengatestore.com or 800-341-4769 (\$11.99; softcover; 100 pages)