

Better Homes and Gardens.

The
Stylemaker
Issue!

SEPTEMBER 2012
BHG.COM \$3.99

inspired ideas

Gorgeous Rooms
& Easy Touches
From 12 Top
Stylemakers

Katie Couric
Her Relaxing
Retreat p.36

Guy Fieri
Fun-Loving
Backyard Bash p.128

Nate Berkus
How to Decorate with
What You Love p.55

Heidi Klum
5 Must-Have
Pieces for Fall p.115

Sibella Court
Brave, Beautiful Color p.44



contents **september 2012**

CONTINUED FROM PAGE 3

home

44 **PASSAGE TO INDIA**

Colors to infuse your home with warmth and spice.

51 **STYLEMAKER NOTEBOOK**

See how star designers really live out of the limelight.

59 **FINELY CRAFTED**

Just like her fabrics, Amy Butler's home is retro cool.

68 **ENTRANCE RAMP**

Ready to splash color on your front door? Read this first.

72 **MOVERS AND CHANGERS**

Seven smart furniture buys that work in nearly any room.

garden

92 **GARDEN IN THE SKY**

A deserted Manhattan train track becomes an oasis.

101 **A NEW LEAF**

Check out the fresh colors and shapes of coralbells.

113 **BRANCH OUT**

Turn pretty fall leaves into a flower-free bouquet.

style

115 **FASHION**

Wardrobe essentials Heidi Klum won't do without.

122 **PRETTY AS A PEACOCK**

Brilliant colors for eyes and nails will make you strut.

125 **TRADE SECRETS**

Simple, foolproof secrets that help stars look their best.

food

134 **PASTA PERFECT**

Kiss ordinary spaghetti good-bye in just half an hour.

146 **QUICK FIXES**

Five perfect dinners for jam-packed weeknights.

152 **KNOW-HOW**

Grilled grapes, leftovers for the lunch box, and more.

170 **DELICIOUS ON \$1**

A deliciously melty, oniony, bacony brunch casserole.

better

173 **NOW**

Chocolate for weight loss and other welcome news.

HEALTH

180 **OFF THE CLOCK**

Tips to manage time—and they're not what you think.

190 **STOCK YOUR FRIDGE**

You'll eat better if better food is easy to find.

FAMILY: 2012 BACK TO SCHOOL SPECIAL

197 **CLASS RULES FOR PARENTS**

Your relationship with the teacher is important, too.

200 **ACE THE BAR EXAM**

A handy guide to choosing the healthiest snack bars.

202 **HEALTHY DIALOGUE**

Encourage your kids to make smart choices.

204 **SCREEN TEST**

But everyone else in my class is on Facebook! Pleeesease?

206 **BRIGHT IDEA**

Youngsters want bold colors and prints in their closets.

215 **FRESH STARTS**

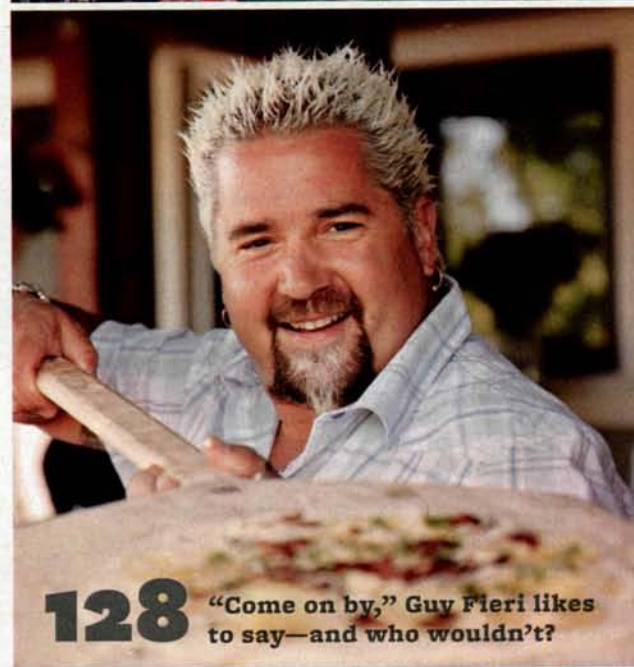
Our Facebook fans share their back-to-school rituals.

Bonus!

Watch videos of our stylemakers in action. Go to BHG.com/Digital to find our digital editions.



84 Rebecca Cole specializes in bringing nature to even tiny urban spaces.



128 "Come on by," Guy Fieri likes to say—and who wouldn't?



in every issue

- 6 **BETWEEN FRIENDS**
- 6 **IN YOUR WORDS**
- 216 **RESOURCES**
- 220 **I DID IT**

reader shopping

- 91 **FLOWER POWER FAVORITE**

A New Leaf

Fancy forms, bright hues, easy growing—there's lots to love about the new coralbells.

BY JANE AUSTIN McKEON | PHOTOS LAURIE BLACK
PRODUCED BY BARBARA MUNDALL

Heuchera Delta Dawn is a colorful companion for this fern, *Athyrium* Pewter Lace.

Coralbells

in new sizes, leaf shapes, and colorful hues are ringing up excitement for the fall planting season. The arrival of these fresh-faced *Heuchera* varieties at garden centers comes just in time to spice up autumn containers and borders. “It used to be that if you had beautiful flowers, the foliage was boring,” says Dan Heims of Terra Nova Nurseries, a leader in *Heuchera* breeding. “With today’s *Heuchera*, you get both.”

Another plus: Coralbells play well with others. “They don’t take over, and they’re a stunning foil for other perennials,” Heims says. Low growers with small leaves make great groundcovers. Medium-size types are ideal container partners and border accents. Tiny types—such as the new Little Cuties Sweet Tart, *above right*—are perfect for pots.

Plant coralbells in fall or spring. The secret to success: good drainage. (That’s why they do so well in raised beds and pots.) “If they dry out to the point of collapse, they’ll rebound quickly with watering,” Heims says. But nearly all are happiest in morning sun and afternoon shade. Where winters are mild, foliage stays vibrant year-round.

HEUCHERA varieties | Perennial

ZONES: 4–9 | **WATER:** Moist but well-drained soil

HEIGHT: 6–10” | **SUN:** Part sun to shade



LITTLE CUTIES
SWEET TART



As plants grow, their crowns rise out of the soil. Either mulch the plant, *above*, or lift, divide, and replant. Don't bury the crowns.



Heuchera leaves last a long time in bouquets. A trio of Green Spice leaves frames sea holly and goldenrod. Freshen water daily.



VARIETIES

Pick your palette

There's a *Heuchera* for every garden, no matter what your space or color scheme.

1) SUGAR PLUM

Frosty purple leaves form 12-inch-tall mounds. Pink blooms.

2) BLACK BEAUTY

Shiny, ruffled black leaves backlit by ruby red. White flowers.

3) MARMALADE

Ruffled umber to sienna leaves with pink undersides. A good landscape pick for the North.

4) ELECTRIC LIME

Light green leaves sport red veins. Stays fresh in Southern heat and humidity.

5) GINGER PEACH

Ruffled leaves change from peach to copper. Bred for the North.

6) GEORGIA PEACH

Foliage deepens to rose. A good choice for Southern landscapes.

7) SPELLBOUND

Purple leaves tinged with silver. Great in pots or in the landscape.

8) DELTA DAWN

Red veins highlight lime green leaves in this versatile variety.

9) SWEET TART

What a Little Cutie! Just one in the new series of mini *Heucheras*. Pot it up as a houseplant, too.



**IF YOU'VE HAD CHICKENPOX,
THE SHINGLES VIRUS
IS ALREADY INSIDE YOU.**

As you get older, your risk
for this painful rash increases.

The fact is, 1 in 3 people will get Shingles in their lifetime. The same virus that causes chickenpox also causes Shingles. And if you've ever had chickenpox, like 98% of adults



Actual photo of the Shingles rash.

in the United States, this virus never leaves your body. Instead, it stays in your nervous system. With each passing decade, there's a greater

chance the virus will emerge as Shingles – a blistering rash that may bring deep, penetrating pain. Unlike chickenpox, Shingles is painful and can lead to long-term nerve pain. So don't wait to learn more about it.

**TALK TO YOUR HEALTH CARE
PROFESSIONAL TODAY OR VISIT
SHINGLESINFO.COM**



Copyright © 2012 Merck Sharp & Dohme Corp.,
a subsidiary of Merck & Co., Inc. All rights reserved.
VACC-1039332-0000 05/12

garden | plantings



Coralbells set container gardens ablaze. In this large pot:
1) *Thalictrum Evening Star*, 2) *Hakonechloa Stripe It Rich*,
3) *Heuchera Cherry Cola*, and 4) *Penstemon Dark Towers*.
Transplant to the garden before the ground freezes.

**Buy coralbells
to plant this fall!**

Go to BHGGardenStore.com to purchase many of the coralbells featured in this story.



A BREED APART

Foamy bells

Coralbells crossed with foamflowers (*Tiarella*) produce foamy bells (*× Heucherella*), plants with superior heat tolerance. Look for trailing varieties, too.

1) GOLD ZEBRA

Deeply lobed, two-tone leaves. Great groundcover.

2) SWEET TEA

Cinnamon-hued leaves turn spicy orange in fall.

3) ALABAMA SUNRISE

Seasonal color changes, from gold to orange-pink. ■

For buying information see page 216.

“



”



Ever since we made M&M'S® Pretzel even Pretzel-ier, mouths couldn't be happier.



GARDEN IN THE SKY, pages 92–99
For more park information—High Line; 212/500-6035; thehighline.org.



A NEW LEAF, pages 101–108
Concrete pot—Bedford Brown (retail), 1825 NW Vaughn St., Portland OR 97209; 503/227-7755. **Other Pots**—Border Concepts; borderconcepts.com and can also be found at independent garden centers. **Most plants**—Terra Nova Nurseries; terranovanurseries.com for a garden center, or **mail-order sources**—Heuchera Delta Dawn, Spellbound, Cajun Fire,

Georgia Peach, Ginger Peach, Sugar Plum, Spellbound, Marmalade, Heucherella Brass Lantern, Salia nemorosa Caradonna—Heritage Perennials; perennial.com. **Heuchera Electric Lime**—Lazy S's Farm and Nursery; lazysfarm.com. **Heuchera Black Beauty, Heuchera Green Spice, Pewter lace fern**—Walter's Gardens; perennialresource.com. **Heuchera Little Cutie Sweet Tart, Phygellus Lemon Spritzer**—Terra Nova Nurseries; terranovanurseries.com for a garden center. **Heucherella Alabama Sunrise, Heucherella Sweet Tea, Golden Zebra**—White Flower Farm; whiteflowerfarm.com. **Agastache Blue Boa**—Sooner Plant Farm; soonerplantfarm.com. **Hebe anomala Purpurea Nana**—Tiny Treasures Nursery; tinytreasuresnursery.com. **Nandina domestica**—monrovia.com for a garden center.

FOOD, page 127

Plates, cake stand, beeswax candles—sources unknown. **Serving bowl** Modernist in yellow—westelm.com. **Pitcher** Aldo in pink Sushi Queen Flatware—anthropologie.com. **Dip-Dyed Baguette Board**—shopterrain.com. **Stitched linen napkin** in Nightshade—calvinklein.com. **Salt/pepper shakers**—Global Table; globaltable.com.

I DID IT, page 220

Cabinetry design and fabrication—Jeffrey Schwarz; jeffreyschwarz@verizon.net. **Rug** Chloe in Copper—Company C; companyc.com. **Paint on cabinet** custom mix—benjaminmoore.com. **Hardware**—restorationhardware.com. **Some pottery** designed by Dyan Schwarz—Potteryworksmobile; potteryworksmobile.com. ■

Waking in the night turning you into a Zombie? Get back to yourself again with MidNite.

Wake before bed or in the middle of the night. . . get to sleep fast, and wake without grogginess.*

MidNite PM
Promotes Healthy Sleep & Manages Minor Pain**

MidNite
Promotes Healthy Sleep

MidNite for Menopause
Promotes Healthy Sleep & Menopause Symptom Relief

GOOD HOUSEKEEPING
America's #1 Natural Sleep Remedy†
Drug Free, Not Habit Forming
Chewable Tablets

Always follow usage instructions | See product label for full usage instructions. Allow a minimum of 3 hours for sleep.
*This statement has not been evaluated by the Food and Drug Administration. This product is not intended to diagnose, treat, cure or prevent any disease.
†Based on IRI Sales Data ending 4/15/12 **For occasional pain such as muscle pain from exercise. DIETARY SUPPLEMENT

MANUFACTURER'S COUPON EXPIRATION DATE 2/28/13

SAVE \$1.00

on one (1) package of either MidNite, MidNite PM or MidNite for Menopause **NEW!**

QUESTIONS?
Visit www.midnitesleep.com

RETAILER: We will reimburse you the face value of this coupon plus 8¢ handling provided you and the consumer have complied with the terms of this offer. Invoices proving purchases of sufficient stock to cover presented coupons must be shown on request. Any other application may constitute fraud. Coupon void where prohibited, taxed or restricted. Consumer must pay any sales tax. Cash value 1/20¢. Reproduction of this coupon is expressly prohibited. Mail to: Concepts In Health, Inc., CMS Dept #88901, One Fawcett Drive, Del Rio, TX 78840

0188901000-000400

8 88901 00076 8