

Greenhouse[®]

MANAGEMENT



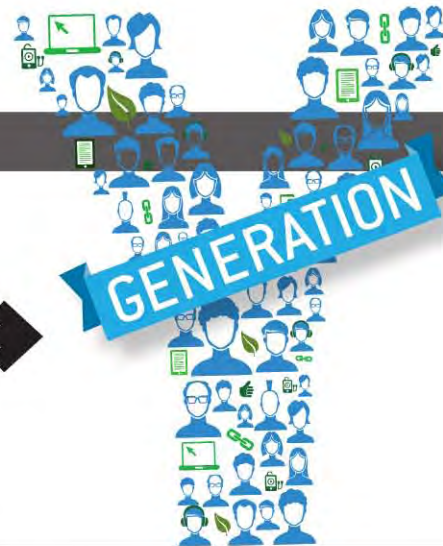
GENERATION

**GROWING UP IN THE
GROWING WORLD**

Get inside the minds of today's youngest greenhouse growers — what you learn about them may surprise you

Greenhouse[®] MANAGEMENT

COVER STORY



26 GROWING UP IN THE GROWING WORLD

One look at today's youngest horticulturists, and it's obvious the negative stereotypes surrounding **Generation Y** couldn't be more untrue. What can that mean for your business?

FEATURES:

- 32 Biological update**
Today's biological control products work much better than past offerings — but care is still key to success
- 36 Mixin' it up**
These days, there's more reason than ever to consider alternative substrates
- 40 'Fried' and true**
A look at the latest drought-tolerant varieties that can thrive in sizzling summer environments
- 48 A plague among plants**
How to identify and manage downy mildew infestation in ornamentals
- 52 Illuminating options**
A roundup of new lighting products for greenhouse operations

48
↓



DEPARTMENTS:

- 6 Outlook**
Amy Stankiewicz
- 8 It's All Digital**
- 10 The PEN**
- 22 Culture**
Pansy Freefall
- 24 Variety Notebook**
- 62 Products**
- 63 Classifieds**
- 65 Ad Index**
- 66 Case Study**

COLUMNS:

- 56 Plant Health**
Raymond Cloyd
- 58 Growing Trends**
Tina Smith
- 60 Tech Solutions**
John W. Bartok Jr.
- 61 Business Minds**
Leigh Branham

62 →



Greenhouse Management, formerly GMPro, (ISSN 1080-6679) is published monthly. Copyright 2013 GIE Media, Inc., 4020 Kinross Lakes Pkwy., Suite 201, Richfield, OH 44286. All rights reserved. No part of this publication may be reproduced or transmitted by any means without permission of the publisher. One-year subscription rates: Free to qualified retailers in the United States. Non-Qualified U.S. subscriptions are \$96 in the United States; \$120 for delivery outside the U.S.; U.S. funds drawn on a U.S. bank required for all foreign subscriptions. Single copy rate: \$8, plus postage while supplies last. Periodicals postage paid at Richfield, Ohio, and additional mailing offices. Postmaster: Send address changes to **Greenhouse Management**, 4020 Kinross Lakes Parkway, Suite 201, Richfield, Ohio 44286. Canada Post: Publications Mail Agreement #40612608. Canada Returns to be sent to Bleuchip International, P.O. Box 25542, London, ON N6C 6B2

‘FRIED’ AND TRUE

They're tenacious and tough — a look at the latest drought-tolerant varieties for sizzling summer environs

By Jimmy Turner and Jenny Wegley,
Dallas Arboretum Plant Trials

The Dallas Arboretum Trial Program takes data on 7,000-plus annuals, perennials, woodies, grasses and trees each year, looking for the toughest of the tough. North Texas is a brutal climate that can swing from one extreme to another; six months of drought is usually followed by a month of flooding. Many of the arboretum's trials focus on heat tolerance and ability to withstand low water requirements, because Texas is experiencing water restrictions like other states. We highlight some great drought-tolerant contenders here.



Evolvulus Blue My Mind

Gomphrena ‘Fireworks’ bred by PanAmerican Seed (*annual*)

This is a beast of a plant that you can only truly appreciate once it has grown out. It's somewhat leggy and sad-looking in nursery containers, but in the landscape this bold plant truly shines. Fuchsia flowers tipped with gold wave on 3-foot-tall stems and mounds of soft textured foliage. Once established, plants can survive easily on lower water use.

Leucophyllum langmaniae ‘Lynn’s Legacy’ (*shrub*)

Found by the legendary Texas plantsman Lynn Lowery, this evergreen shrub is truly a gift to the garden. Glowing lavender-pink flowers frost soft grey-green foliage off and

UNLESS INDICATED, ALL PHOTOS COURTESY OF DALLAS ARBORETUM & BOTANICAL GARDENS

Euphoric Euphorbia blooms generously even under the most stressful summer conditions. For maximum flowering, Euphoric should be planted in an area with at least six hours of full sun. Vigorous and well-branched, Euphoric has dark green foliage that spreads quickly in the landscape. It is low-maintenance and self-cleaning, requiring no deadheading.

Terra Nova Nurseries

Echinacea **'Vanilla Cupcake'** is an anemone-type variety with double white flowers and a strong, upright structure. Featuring a compact, multibranched habit, it has 19 in. foliage height, 16 in. foliage spread, and 22 in. flowering height. For zones 4 to 10.

Eucomis **'Glow Sticks'** features glowing foliage that changes from coppery-rose to burnished gold. The foliage is very wavy when grown in full sun. Upright and



Echinacea Vanilla Cupcake

neat-growing, this variety has 15 in. foliage height, 18 in. foliage spread, and 18 in. flowering height. Great for zones 6 to 10, sun to part shade.

Terra Nova's Heuchera **'Paprika'** touts glowing coral foliage in the spring and veiled cherry-coral foliage in summer and fall. Medium-large leaves on a medium-sized plant feature 8 in. foliage height, 16 in. foliage spread, and 12 in. flowering height. For zones 4 to 9, part shade (full sun in the Pacific Northwest). **GM**



Heuchera Paprika



Eucomis Glow Sticks

TERRA NOVA NURSERIES VARIETIES COURTESY OF TERRA NOVA

drift®
groundcover roses


New!
Popcorn Drift®
'Novarospop' PPAF

THE ONLY
TRUE
groundcover roses

Finally, a groundcover rose that's true to type.

At just 2-3' wide x 1 1/2-2' tall, you don't have to worry about rangy, overgrown and sprawling habits – you'll be pleased with the compact and tidy nature found in the whole series.

1-800-457-1859
www.starrosesandplants.com



AVAILABLE IN 7 GREAT COLORS

greenhousemanagementonline.com/readerservice - #33

Were You Featured In This Issue?



Reprints enable you to reuse your article and simply place it into the hands of your target audience. Having been featured in a well-respected publication adds the credibility of a third-party endorsement to your message.

Give yourself a competitive advantage with reprints.

800-456-0707
reprints@gie.net