

Bringing your garden to life

January/February 2009

# gardening

## HOW-TO

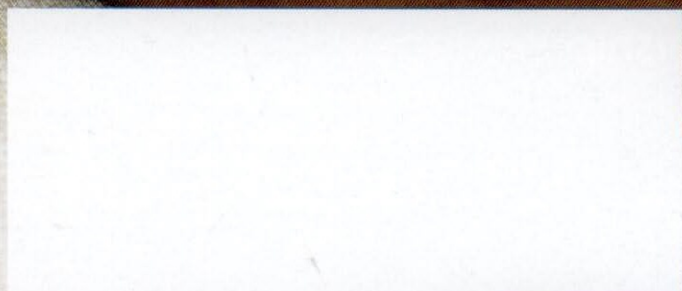
**SPECIAL  
REPORT**

**best new  
plants**  
*for* **2009**

**love  
those  
leaves!**

**11** **fragrant  
foliage plants  
to try now**

**save \$\$  
grow your own  
groceries**





20



24



30

# features

January/February 2009 • [www.gardeningclub.com](http://www.gardeningclub.com)

## TECHNIQUES

### 20 Grow Your Own Groceries

How much money will you save when you grow your own fruits and veggies? The answer might surprise you.

BY VERONICA LORSON FOWLER

## DESIGN

### 24 Fragrant Foliage

Don't rely only on flowers to stimulate your sense of smell. Try these fabulous plants with fragrant foliage and discover new garden scents you'll love.

BY AMY GRISAK

## PLANTS

### 30 New Varieties 2009

We've chosen this year's best new plants—take a peek and find your own favorites!

COMPILED BY ELIZABETH NOLL

## On the cover

The new 'Sweet Seedless' tomato has a rich flavor and is the perfect size for slicing. Photograph courtesy of W. Atlee Burpee & Co.

## PROJECT

### 38 Make a No-Fuss Fountain

Bring the relaxing sound of bubbling water to your garden with this easy weekend project.

BY AMY SITZE




## EDITORIAL QUESTIONS OR COMMENTS

Editors, *Gardening How-To*, PO Box 3416, Minnetonka, MN 55343-2138 e-mail: [editors@gardeningclub.com](mailto:editors@gardeningclub.com)

## MEMBERSHIP OR CLUB QUESTIONS OR COMMENTS

800-324-8454 (Mon.-Fri., 7:30 a.m.-6 p.m. Central time) e-mail: [memberservices@gardeningclub.com](mailto:memberservices@gardeningclub.com)

*Gardening How-To* (ISSN 1087-0083) is published bimonthly by the National Home Gardening Club, PO Box 3416, Minnetonka, Minnesota 55343. To become a Club member, send \$18 annual dues to: National Home Gardening Club, PO Box 3416, Minnetonka, MN 55343. For Canadian membership, please send \$36 Canadian funds (including 6 percent GST) for annual dues. \$15 of each year's dues is for an annual subscription to *Gardening How-To*. Periodicals postage paid at Hopkins, MN, and additional mailing offices. Direct editorial inquiries to *Gardening How-To*, PO Box 3416, Minnetonka, MN 55343. POSTMASTER: Send address changes to *Gardening How-To*, PO Box 3416, Minnetonka, MN 55343-2116. Canadian GST registration number R131271496. Canadian Post Publication Mail Agreement No. 40065266. Return undeliverable Canadian addresses to: *Gardening How-To*, 1351 Rodick Road, Markham, Ont. L3R5K4. Copyright 2009, North American Membership Group Inc. All rights reserved. Produced in U.S.A. Volume 14, Number 1, Issue 76.



# new varieties 2009

Compiled by **Elizabeth Noll**

Written by **Elizabeth Noll  
and Glen Seibert**

**G**ardening in 2009 isn't just about growing the most beautiful flower. Breeders have been scrambling to create tougher, stronger, more drought-tolerant, and longer-blooming versions of garden favorites. But plant people also have a whimsical streak that drives them to seek out unusual colors and seductive fragrances—qualities that don't do anything useful except tickle your fancy. At *Gardening How-To*, we reviewed hundreds of new plants and chose 21 favorites that represent the best of both worlds. Some of these are brand new to the market, while others were introduced in limited quantities earlier but are widely available for the first time this year.

Apple 'Wildung' SnowSweet

**WebExtra**

To see even more new plants, visit  
[www.gardeningclub.com](http://www.gardeningclub.com) and click on WebExtra.



**Agastache 'Summer Glow'**

Sounds like a sneeze, looks like a dream. 'Summer Glow', from Terra Nova Nurseries, is the first hummingbird's mint to boast golden, 2-inch trumpets with deep brown calyxes. And color isn't the only thing that sets it apart from traditional reds and blues. This adaptable, drought-tolerant survivor likes it hot, but will tolerate cold, wet winters on sunny south- or west-facing slopes or in raised beds. And hummingbirds love these nectar-rich yellow flowers as much as they love the scarlet ones.

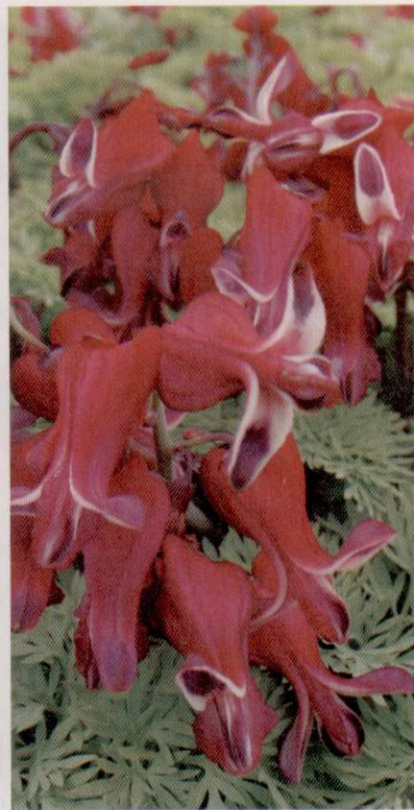
**Sun:** Full sun  
**Soil:** Lean, well-drained  
**Height:** 20 inches  
**Width:** 18 inches  
**Zones:** 6 to 10  
**Source:** Local garden centers; see Terra Nova Web site for store locator.



**Dianthus 'Dragon Fruit'**

The fluffy, ruffled look and distinctive fragrance of this pure pink, magenta-edged dianthus are the icing on the cake. Its real claim to fame is its heat tolerance. Bred by Kevin Hurd for Walters Gardens, 'Dragon Fruit' is one of the new Fruit Punch series of double dianthus, all of which are tough enough to last from spring through hot, humid summers and well into fall. This butterfly magnet has a mounding form that makes it a perfect border, ground cover, or container plant.

**Sun:** Full to part sun  
**Soil:** Evenly moist, well-drained  
**Height:** 8 inches  
**Width:** 12 inches  
**Zones:** 4 to 9  
**Sources:** Local garden centers; see Perennial Resource Web site for store locator.



**Dicentra 'Burning Hearts'**

This 2009 addition to the Hearts series from Skagit Gardens will charm your socks off with its flirty, red-petticoat blossoms hovering above soft fernleaf foliage. But looks are only part of this irresistible package. Who hasn't fantasized about a bleeding heart that blooms longer, stands up better to heat and drought, and—if kept moist—delays dormancy? Others in the series: 'Ivory Hearts' (white blossoms) and 'Candy Hearts' (pink blossoms).

**Sun:** Full to part shade  
**Soil:** Moist, well-drained, humus-rich  
**Height:** 10 to 12 inches  
**Width:** 12 inches  
**Zones:** 3 to 9  
**Source:** Local garden centers



### ***Echinacea* 'Tomato Soup'**

Imagine a salvo of these vivid coneflowers bursting into bloom across your garden. This breakthrough echinacea explodes in true fire-engine red, and the breathtaking color holds for weeks, even through the heat of summer. Bred and introduced by Terra Nova Nurseries, it's one of three new coneflower varieties. The others are rich yellow 'Mac 'n' Cheese' and the delightful pompon 'Pink Poodle'.

**Sun:** Full sun

**Soil:** Coarse, well-drained

**Height:** 30 to 36 inches

**Width:** 24 to 30 inches

**Zones:** 4 to 9

**Sources:** Local garden centers; see Terra Nova Web site for store locator.



### ***Lilium* 'Bonbini'**

Once in a blue moon, a lily comes along that crosses the line—a flower so gorgeous and so fine that even folks who don't normally love lilies decide they must have it. 'Bonbini', an Oriental-trumpet hybrid from Dutch Gardens, is such a flower. The large, 8-inch, soft yellow blooms show off a striking starburst design, and they're fragrant to boot. 'Bonbini' is cold-hardy and exceptionally vigorous.

**Sun:** Full to part sun

**Soil:** Average, well-drained

**Height:** 4 feet

**Width:** 18 inches

**Zones:** 4 to 9

**Source:** Dutch Gardens



### ***Penstemon* 'Sweet Joanne'**

Many large-flowered penstemon cultivars are tender perennials, hardy only in climates as warm as Zone 7. *Penstemon* 'Sweet Joanne', bred at the University of Nebraska and introduced by Blooms of Bressingham, breaks the mold. This upright, long-lived penstemon survives Zone 5 winters to produce large pink flowers with white throats and bright magenta stripes. It's also resistant to pests and disease. Blooms cover the stems from May to June; with deadheading, a second flowering is possible in fall.

**Sun:** Full sun

**Soil:** Moist, well-drained

**Height:** 2 feet

**Width:** 2 feet

**Zones:** 5 to 9

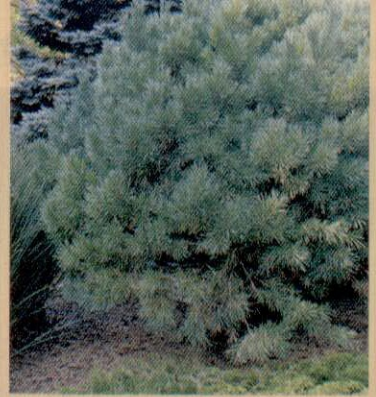
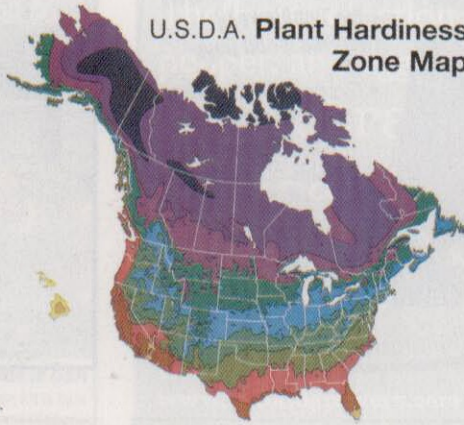
**Source:** Local garden centers

Range of average annual minimum temperatures for each zone.

|         |               |
|---------|---------------|
| Zone 1  | Below -50°F   |
| Zone 2  | -50° to -40°F |
| Zone 3  | -40° to -30°F |
| Zone 4  | -30° to -20°F |
| Zone 5  | -20° to -10°F |
| Zone 6  | -10° to 0°F   |
| Zone 7  | 0° to 10°F    |
| Zone 8  | 10° to 20°F   |
| Zone 9  | 20° to 30°F   |
| Zone 10 | 30° to 40°F   |
| Zone 11 | Above 40°F    |

This zone map, developed by the U.S. Department of Agriculture, separates the United States and Canada into similar growing areas based on average low temperatures.

### U.S.D.A. Plant Hardiness Zone Map



### UPCLOSE answer (see page 60) blue blade

Scots or Scotch pine, which can grow 100 feet tall in the wild and live 300 years, is native to Europe and Asia but has become naturalized in parts of North America after centuries of cultivation. The dwarf blue Scots pine (*Pinus sylvestris* 'Glauca Nana', Zones 3 to 7) is useful for homeowners because of its small size. It grows 6 to 8 inches per year to about 5 to 8 feet tall, making it great for foundation beds and rock gardens. It's adaptable to many soils but requires full sun and good drainage.

- All-America Rose Selections, [www.rose.org](http://www.rose.org).
- Bailey Nurseries, [www.baileynurseries.com](http://www.baileynurseries.com).
- Blooms of Bressingham, [www.bobna.com](http://www.bobna.com).
- Forever & Ever Hydrangea, [www.foreverhydrangea.com](http://www.foreverhydrangea.com).
- Monrovia, [www.monrovia.com](http://www.monrovia.com).
- Perennial Resource, [www.perennialresource.com](http://www.perennialresource.com).
- Proven Winners, [www.provenwinners.com](http://www.provenwinners.com).
- Terra Nova Nurseries, [www.terranovanurseries.com](http://www.terranovanurseries.com).

#### Tool Shop, page 42

- Sources for hoses:
- Dramm, Manitowoc, WI, 920-684-0227, [www.dramm.com](http://www.dramm.com).
- Gardener's Supply, Burlington, VT, 888-833-1412, [www.gardeners.com](http://www.gardeners.com).
- Gempler's, Madison, WI, 800-382-8473, [www.gemplers.com](http://www.gemplers.com).
- Lee Valley Tools, Ogdensburg, NY, 800-871-8158, [www.leevalley.com](http://www.leevalley.com).

#### Make a No-Fuss Fountain, page 38

Creative Habitats Inc., Minnetonka, MN, 952-939-0497.

Call Now  
For You Or A  
Loved One

# Live your life, Love your bath.

Put the smile back into bathing with a **Premier Walk-In Bath**.

If you struggle taking your bath, talk to us at Premier about our extensive range of walk-in baths.

- Enjoy a relaxing bath again, without the fear of slipping or falling.
- The walk-in door feature allows easy access and exiting at all times when taking a bath.

• **Hydrotherapy**  
jets soothe away  
your aches and  
pains.



- Karen Grassle  
"Little House on  
the Prairie"

Call Now • Toll Free  
**1-800-578-2899**

SOURCE CODE 65019

Yes! Please send me a FREE COLOR BROCHURE about Premier Walk-In Baths.

65019

Name \_\_\_\_\_  
Telephone \_\_\_\_\_  
Address \_\_\_\_\_  
City \_\_\_\_\_ State \_\_\_\_\_ Zip \_\_\_\_\_

Send to: Premier Bathrooms Inc,  
2330 South Nova Road  
South Daytona, Florida 32119

**Premier**  
Care in Bathing



Financing by  
GE Money  
Offer subject to approval  
from GE Money Bank